



BAMBURI PALM VILLAS

Opposite Braeburn International School,
Bamburi, Mombasa

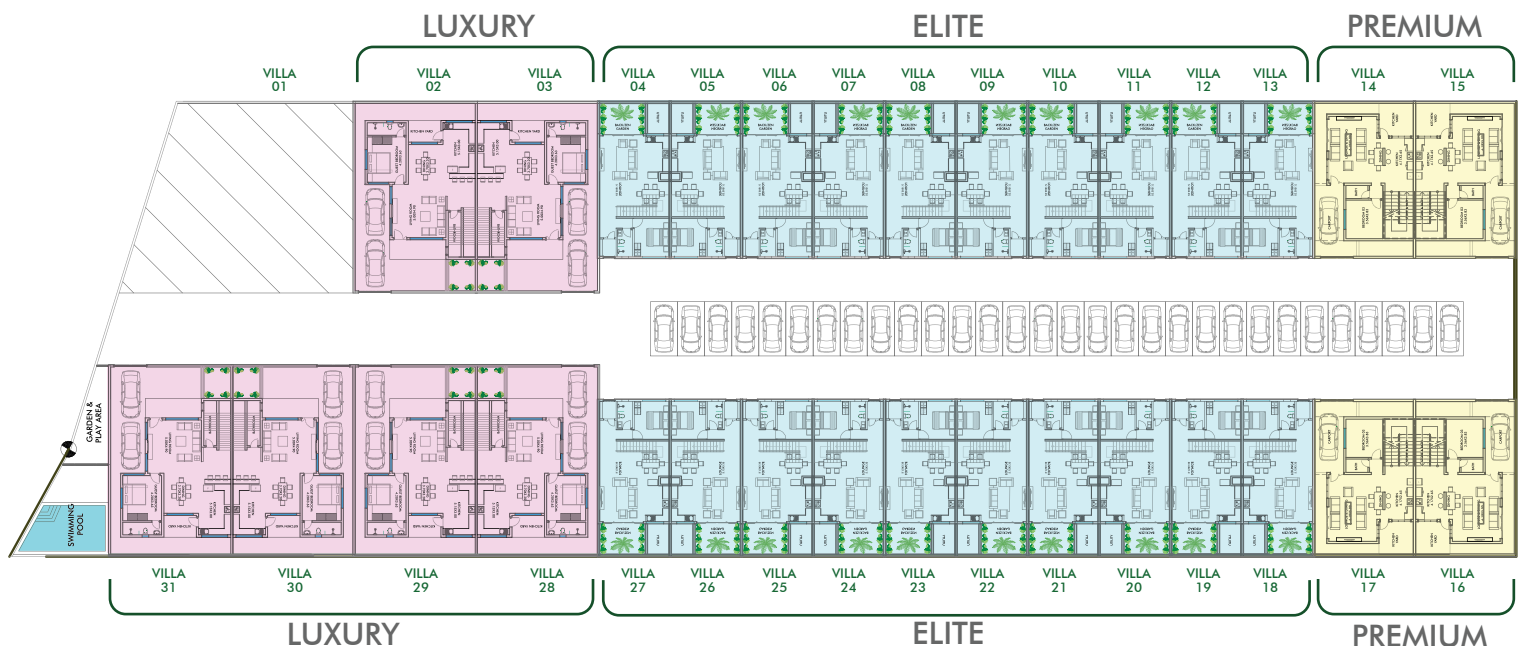


ABOUT BAMBURI PALM VILLAS

After the success of our project the Bamburi Coconut Villas, we bring to you yet another modern villa project - BAMBURI PALM VILLAS - a private space that combines nature, functionality, privacy with great location.

The architecture of this project creatively blends contemporary style with luxurious lifestyle amenities making this an ideal dwelling for its residents.

The project offers spacious and well-designed 4BR townhouses in 3 different categories- Elite, Premium & Luxury. The project offers best in space, comfort and quality living. Surrounded by serene privacy, and the finest of modern facilities which will give you a royal feel. It is well planned and built with the latest construction methods.



4 BR VILLA - ELITE

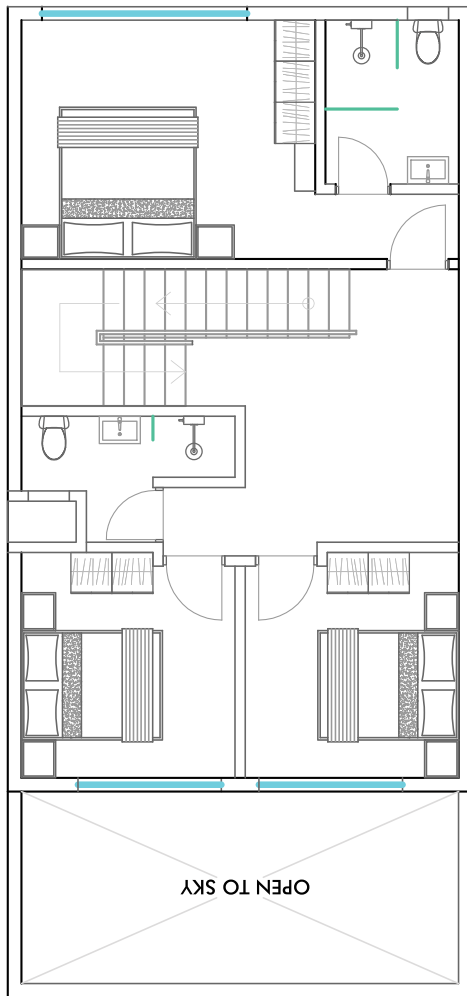
Total Built-up area: 1680 sq. ft.

[Ground - 840 sq. ft.; Upper floor -840 sq. ft.; Terrace (open to sky)- 840 sq. ft.]

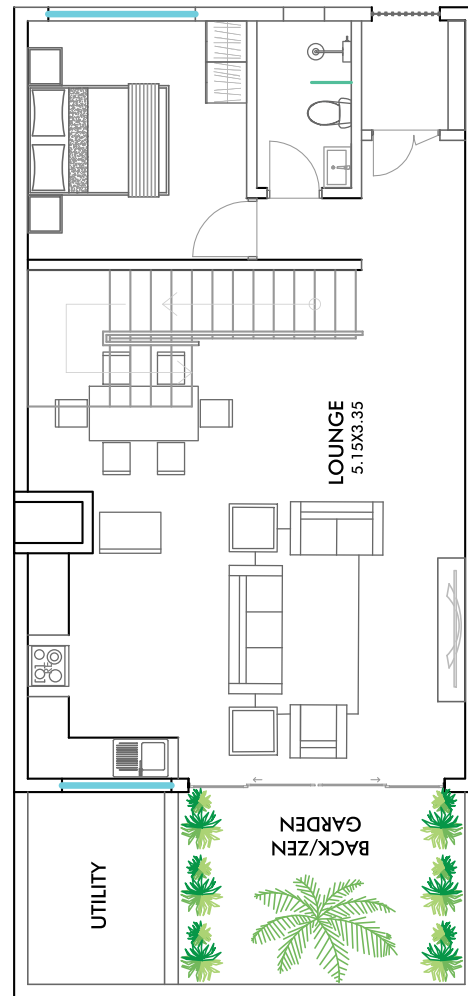
[Plot Area: 1060 Sq. Ft

KSH

8.95M



BUILT UP AREA
FIRST FLOOR 840 SQFT



BUILT UP AREA
GROUND FLOOR 840 SQFT

FIRST FLOOR

GROUND FLOOR

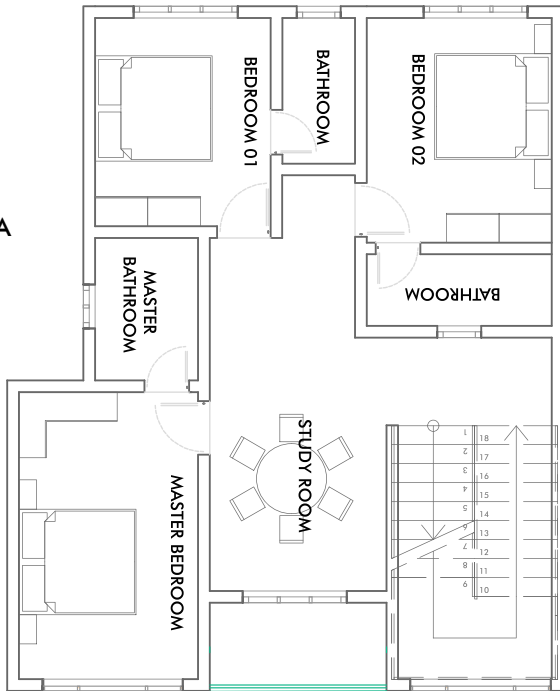


4 BR VILLA PREMIUM

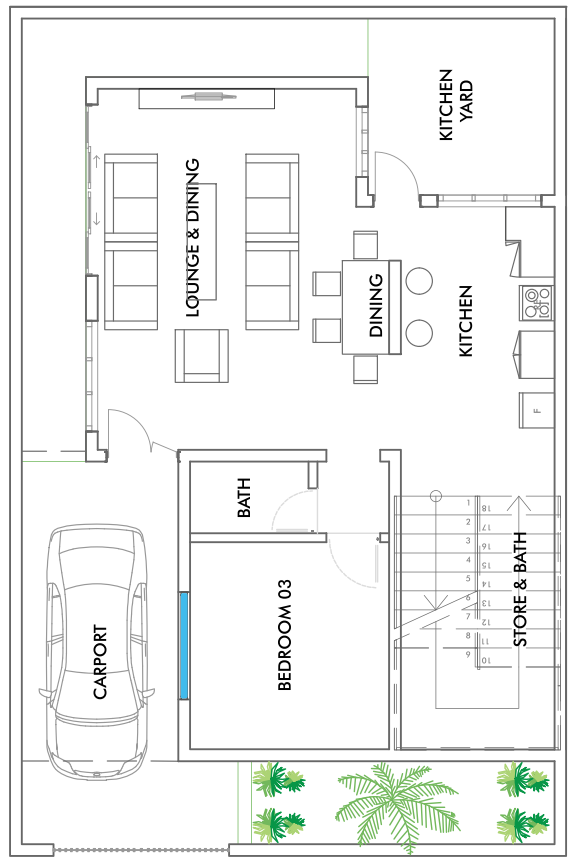
Total Built-up area: 1970 sq. ft.
(Ground – 870 sq. ft.; Upper floor -1100 sq. ft.;
Terrace (open to sky)- 1100 sq. ft.)
[Plot Area: 1480 Sq. Ft]

**KSH
11.95M**

**BUILT UP AREA
FIRST FLOOR
870 SQFT**



FIRST FLOOR



**BUILT UP AREA
GROUND FLOOR
1100 SQFT**

GROUND FLOOR

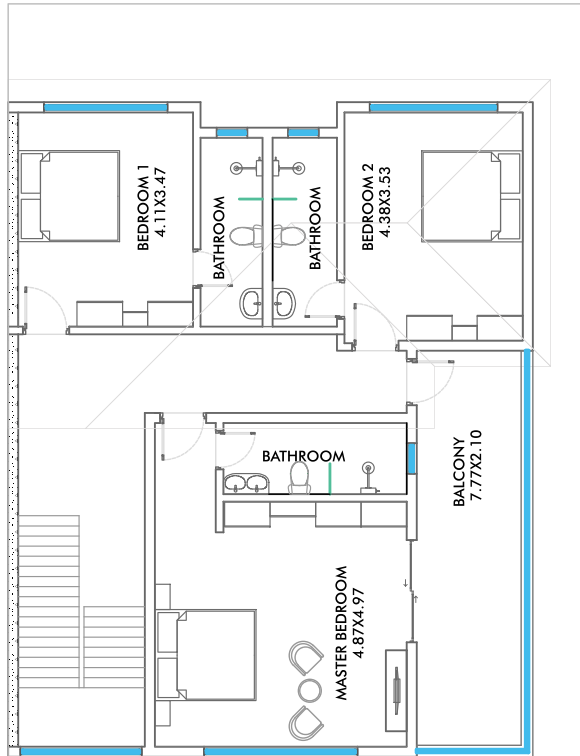


4 BR VILLA LUXURY

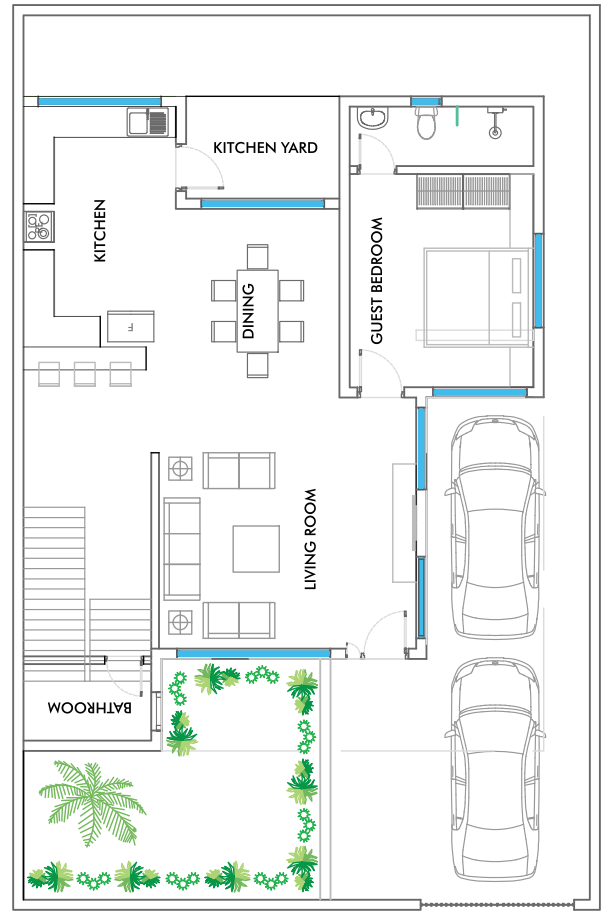
Total Built-up area: 2660 sq. ft.
(Ground – 1260 sq. ft., Upper floor -1400 sq. ft.)
Terrace (open to sky)- 1250 sq. ft.]
[Plot Area: 1800 Sq. Ft]

KSH
13.95M

BUILT UP AREA
FIRST FLOOR
1400 SQFT



FIRST FLOOR



BUILT UP AREA
GROUND FLOOR
1260 SQFT

GROUND FLOOR



PROJECT AMENITIES:

ENVIRONMENT:

- Backup generator for common areas
- Garden
- Borehole Water
- Common Swimming Pool for residents
- Cabro road within the project premises
- Perimeter Wall and Security Fencing

VILLA FEATURES:

- Wardrobes
- Satellite TV & Phone points
- AC points & Piping
- UPVC windows
- Wooden main door

LIVING, DINING & BEDROOM:

- Vitrified tiled floor throughout
- High-lighted wall in living room

KITCHEN:

- Built-in cabinets with granite counter tops
- Designer Floor and wall tiles in Kitchen and Bathroom.

BATHROOMS:

- Designer floor and wall tiles
- Designer sanitary ware, fitting and accessories.

EXTERIOR:

- Landscaped Garden
- Parking



SCHEDULE OF PAYMENT

COMMITMENT- Commitment- Ksh 1,000,000 to be paid within 7 days of signing LoF

DEPOSIT – 20 % deposit (including the commitment) to be paid during ground breaking.

BALANCE – to be paid in 30 monthly instalments. (Interest Free)

HANDOVER- Ksh 1,000,000

VILLA CATEGORIES:

CATEGORY	SIZE	PRICE	UNIT
ELITE	1,680 sq. ft.	8.95M	4BR
PREMIUM	1,970 sq. ft.	11.95M	4BR
LUXURY	2,660 sq. ft.	13.95M	4BR





NEAR-BY CONNECTIVITY:

-  Braeburn Mombasa International School- Opposite
-  Premier Hospital- 8 km
-  Haller Park- 5 km
-  Citymall- 6 km
-  Naivas Supermarket- 6 km
-  Yuls Restaurant – 7km
-  Mtwapa Town- 12 km
-  Nyali Cinemax- 11 km
-  Mombasa Island- 15 km

NAIROBI OFFICE:

Parkview Heights, M4
Mombasa Road,
Tel: +254 705 791 702
+254 777 100 050

MOMBASA OFFICE:



3rd Floor, Fairdeal Plaza,
Mombasa-Malindi Road,
P.O.BOX- 81911-80100,
Tel: +254 782 005 000

EMAIL:

sales@fairdealproperties.biz
marketing@fairdealproperties.biz

WEBSITE:

www.properties.fairdeal.co.ke

-  @fairdealpropertieske
-  @FDILproperties
-  @fairdeal.properties.kenya

DEVELOPED & MARKETED BY:



FAIRDEAL
PROPERTIES